

John Meyer, MT Bar # 11206  
Cottonwood Environmental Law Center  
P.O. Box 412 Bozeman, MT 59771  
(406) 546-0149 | Phone  
[John@cottonwoodlaw.org](mailto:John@cottonwoodlaw.org)

*Attorney for Plaintiffs*

IN THE UNITED STATES DISTRICT COURT  
FOR THE DISTRICT OF MONTANA

|                            |                            |
|----------------------------|----------------------------|
| COTTONWOOD ENVIRONMENTAL ) |                            |
| LAW CENTER; GALLATIN )     |                            |
| WILDLIFE ASSOCIATION; )    | Case No. 9:17-cv-00155-DLC |
| YELLOWSTONE BUFFALO )      |                            |
| FOUNDATION )               |                            |
| )                          | EXHIBIT 11                 |
| Plaintiffs, )              |                            |
| vs. )                      |                            |
| )                          |                            |
| U.S. SHEEP EXPERIMENT )    |                            |
| STATION; AGRICULTURAL )    |                            |
| RESEARCH SERVICE )         |                            |
| )                          |                            |
| Defendants. )              |                            |
| )                          |                            |

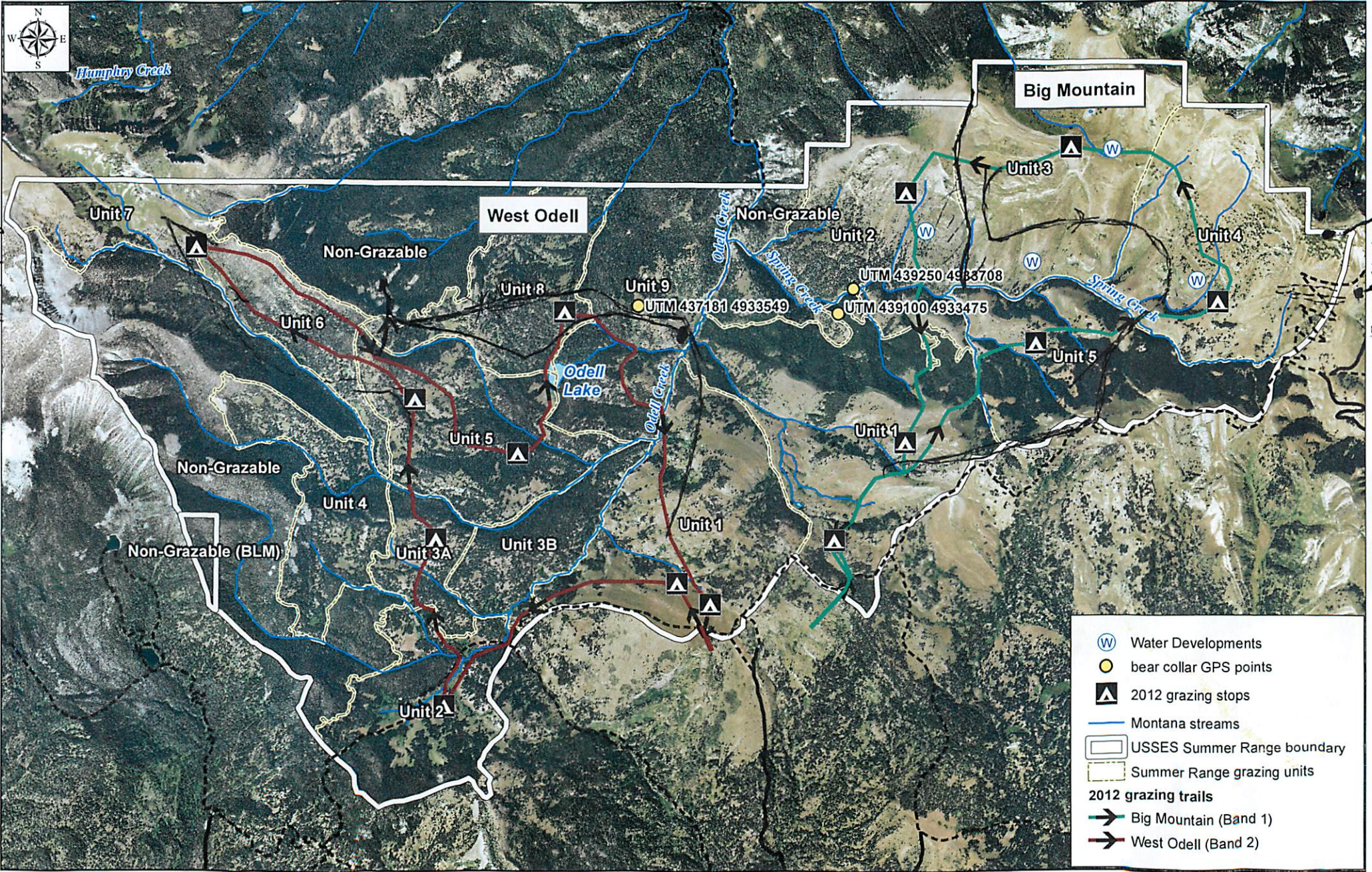
---



Bed ground  
camp site  
BY creek below dot  
in #9

1 day to trail #3 to #1 on 9/3  
trail 1/12

**DRAFT COPY**



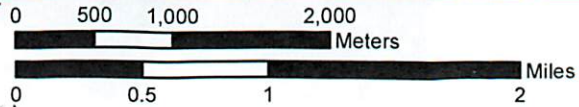
17 people in #7

Bear K:11

**FOR INTERNAL USE ONLY**

Disclaimer: The points and lines representing the places grazed (stops) and trails between stops are generalized because sheep bands spread out while grazing and when being trailed from one location to another.

8/5/12  
8/31/12 #1  
8/30/12 trail  
8-23 → 8-30 #9



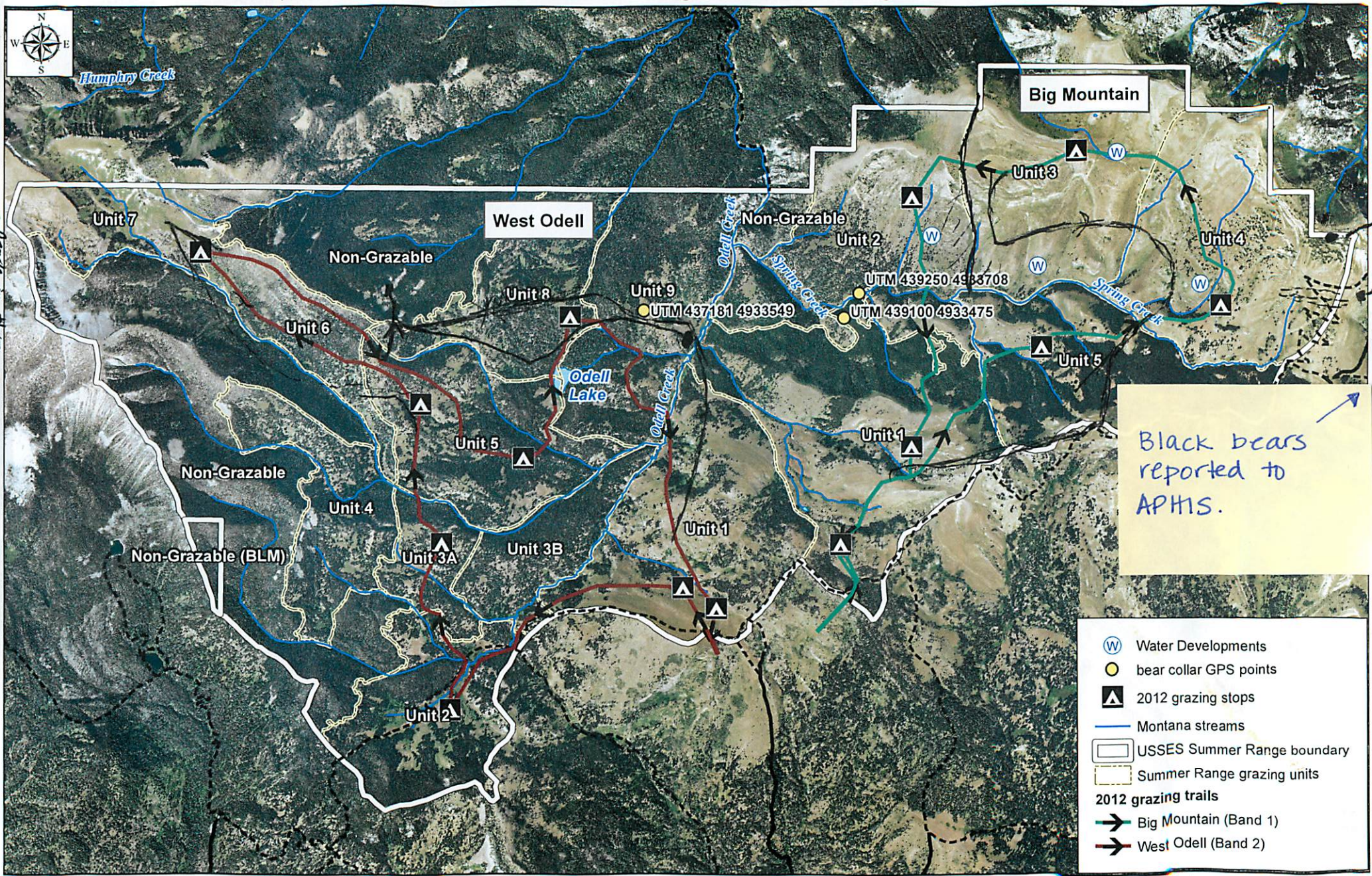
Coordinate System: NAD83 UTM Zone 12N



Bed ground  
camp site  
by creek below dot  
in 9

1 day to trail #3 to #1 on 9/3  
trail 9/2/12

**DRAFT COPY**

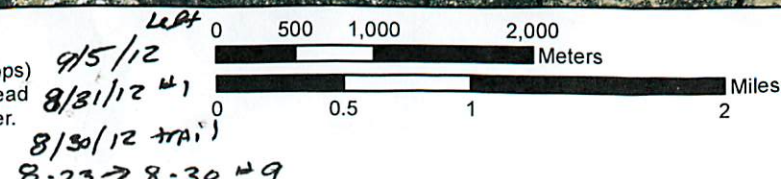


Black bears reported to APHIS.

- (W) Water Developments
- bear collar GPS points
- ▲ 2012 grazing stops
- Montana streams
- USSES Summer Range boundary
- Summer Range grazing units
- 2012 grazing trails**
- Big Mountain (Band 1)
- West Odell (Band 2)

**FOR INTERNAL USE ONLY**

Disclaimer: The points and lines representing the places grazed (stops) and trails between stops are generalized because sheep bands spread out while grazing and when being trailed from one location to another.



Coordinate System: NAD83 UTM Zone 12N